



FORUM ON
CONSTRUCTION LAW
Building the Best Construction Lawyers

2016

Midwinter Meeting

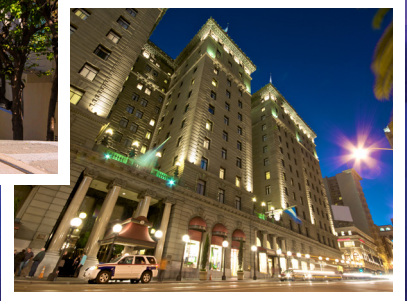
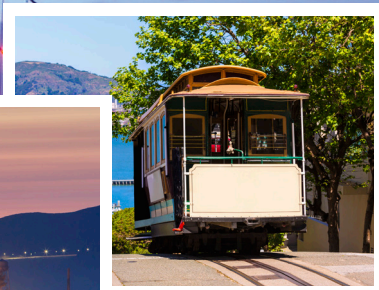
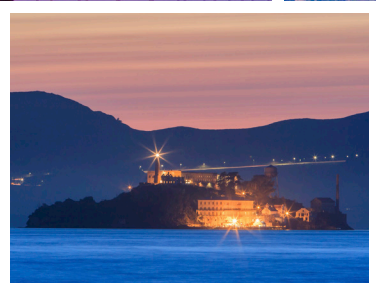
January 21-22, 2016

San Francisco, CA

Livin' On The Fault Line

Cutting Edge Solutions

for Seismic Events that Threaten Your Construction Client



The Westin St. Francis
Union Square

DEAR COLLEAGUES:

At the calmest and most unexpected of moments it happens: An event that creates a seismic shift in the world that surrounds you. Whether actual or metaphorical, the event and its aftermath must be confronted immediately with sage advice and a calm demeanor, even if it has never happened to you before. You must be ready to be the first line of response. You are livin' on the fault line.

While this may all seem a bit fatalistic, it should actually be encouraging. Being able to respond to our clients' needs in almost any crisis makes us indispensable, and leading our clients safely through a crisis cements our relationship with them. Cumulatively, such preparedness and leadership are what make us essential counselors to our clients. The 2016 Midwinter Meeting focuses on the keys to providing good counsel to clients who are presented with unexpected challenges. Who better to kick off our programming than Apollo 13 astronaut and Presidential Medal of Freedom recipient Fred Haise? Using advice, training and great improvisation, Lunar Module Pilot Haise and his fellow Apollo 13 astronauts managed to guide their severely damaged spacecraft around the moon to a successful splashdown on Earth.

The program then turns to a discussion of cybersecurity breaches and other high-tech pitfalls. The first two workshops provide a choice of learning about stormwater and other environmental permits that can stop a project in its tracks and project audits that can wring profits from project participants. The next session addresses the problems of losing a key employee and witness and of protecting confidential information. The afternoon workshops will bring you up-to-date with the current state of the economic loss doctrine or new applications for builders risk insurance. Next, you will attend a "labor-palooza" presenting workplace issues including those created by legalized marijuana, sexual harassment and undocumented workers. The first day ends with hot topics about bid errors and bid protests.

The second morning brings you a discussion of new issues with force majeure. The Friday workshops will ground you in problems created by LEED and sustainable building failures or owner and contractor bankruptcies. The program finishes with a look at the ethical issues attorneys face to keep up with the explosion of new technology on the project.

In addition to the superb educational content of the program, networking opportunities abound, especially the First Time Attendee Orientation, the Welcome Reception and the Women's Networking Event. The Diversity Breakfast will feature Carla Christofferson, Executive Vice President and General Counsel at AECOM, describing ways to actively support diversity while building teams.

What better place to learn such important lessons about vigilance and resourcefulness than beautiful surroundings of the City of San Francisco? With the Rock, the Golden Gate and cable cars climbing to the sky, the "City by the Bay" has demonstrated resilience and strength in the face of repeated adversity. This incredible environment makes it the perfect setting for our meeting.

Those who join us at this year's Midwinter Meeting will be surrounded by a championship community with wonderful dining, supplemented by a rich cultural and artistic history, and a short distance away from the pastoral beauty of the Napa Valley. Our planned social events will allow you to experience all of it with a sunset wine tasting, a Forum After Dark event at a nearby speakeasy, a twilight tour of Alcatraz and a special day trip to Napa Valley. The historic and beautiful Westin St. Francis will be your launching and landing site for a Midwinter Meeting like no other. All this awaits you in San Francisco in late January of 2016. Be here to experience it for yourself. Do not be one who regrets being unprepared.

GOVERNING COMMITTEE LIAISON

Stanley J. Dobrowski

Calfee Halter & Griswold LLP
Columbus, OH

PROGRAM CO-CHAIRS:

Allen W. Estes, III

Gordon Rees Scully Mansukhani LLP
Seattle, WA

Edward B. Gentilcore

Sherrard German & Kelly, P.C.
Pittsburgh, PA



2015-2016 LEADERSHIP

CHAIR

R. Harper Heckman
Nexsen Pruet, PLLC
Greensboro, NC

CHAIR-ELECT

William M. Hill
Mintz, Levin, Cohn, Ferris, Glovsky and
Popeo, P.C.
Boston, MA

GOVERNING COMMITTEE

Jeffrey R. Cruz
E.E. Cruz & Company, Inc.
New York, NY

Stanley J. Dobrowski
Calfee, Halter & Griswold LLP
Columbus, OH

Christopher S. Dunn
Waller Lansden Dortch & Davis, LLP
Nashville, TN

Joseph C. Kovars
Ober | Kaler
Baltimore, MD

Kristine A. Kubes
Kubes Law Office PLLC
Minneapolis, MN

Arlan D. Lewis
Bradley Arant Boult Cummings LLP
Birmingham, AL

IMMEDIATE PAST CHAIR

Steven B. Lesser
Becker & Poliakoff
Ft. Lauderdale, FL

Deborah B. Mastin
Law Office of Deborah Mastin
Miami, FL

Patrick J. Poff
Trenam Kemker
Tampa, FL

Thomas L. Rosenberg
Roetzel & Andress L.P.A.
Columbus, OH

David A. Scotti
Law Offices of David A. Scotti
Pittsburgh, PA

Angela R. Stephens
Stites & Harbison PLLC
Louisville, KY

David J. Theising
Harrison & Moberly, LLP
Indianapolis, IN

PROGRAM SCHEDULE

WEDNESDAY, January 20, 2016

12:00 P.M. – 5:00 P.M.

ADVANCED REGISTRATION OPEN

2:00 P.M. – 5:00 P.M.

CONSTRUCTION LAW PRACTICUM -
WRITTEN ADVOCACY IN CONSTRUCTION LITIGATION

3:00 P.M. – 5:00 P.M.

ON-SITE REGISTRATION OPEN

5:30 P.M. – 7:30 P.M.

FIRST TIME ATTENDEE & NEW MEMBER RECEPTION

THURSDAY, January 21, 2016

7:30 A.M. – 5:00 P.M.

REGISTRATION/EXHIBIT HALL OPEN

7:30 A.M. – 8:00 A.M.

CONTINENTAL BREAKFAST

8:00 A.M. – 9:00 A.M.

KEYNOTE SPEAKER:

Apollo 13 Astronaut, Fred Haise

As construction lawyers, we are often called upon to advise our clients on critical events for which there is a need for precise direction. Who better to kick off our mid-winter programming than Presidential Medal of Freedom Recipient and Apollo 13 Astronaut, Fred Haise? With ingenuity and the coordinated efforts of both the crew and Mission Control in Houston, Lunar Module Pilot Haise and his fellow Apollo 13 astronauts managed to guide their severely damaged spacecraft around the moon and through Earth's atmosphere to a successful splashdown. In doing so, these brave astronauts exemplified the teamwork and coordination our clients demand when "failure is not an option."

9:00 A.M. - 9:10 A.M.

WELCOME FROM THE CHAIR AND OPENING REMARKS

9:10 A.M. - 10:10 A.M.

PLENARY I:

We Have Been Hacked! What Do We Do?:

Cybersecurity Breaches, Risks and Safeguards In the Construction Industry

Today's news reports are replete with stories of security and data breaches hitting businesses around the globe. The construction industry is not immune from these technological challenges. Leading practitioners and consultants in this area have been assembled to discuss the high tech pitfalls and risks in appealing demand for access, collaboration, expedited communication and remote storage of sensitive electronic data.

Jeff Birnbach

The Sylint Group | Sarasota, FL

Janice Mock

Nossaman, LLP | San Francisco, CA

10:10 A.M. – 10:20 A.M.

NETWORKING BREAK

10:20 A.M. – 11:20 A.M.

WORKSHOP A

**You Got the Stormwater Permit, Right?
Permits, Postponements and Penalties**

Like it or not, stormwater and other environmental controls and permitting problems are growing at the federal, state and local levels. Projects and clients are facing increased and long-lasting responsibility for stormwater management. This session will feature speakers experienced in the latest developments.

Leah F. Pilconis

The Associated General Contractors of America | Arlington, VA

Edmundo A. Puchi, P.E., J.D.

MCM Construction, Inc. | North Highlands, CA

10:20 A.M. – 11:20 A.M.

WORKSHOP B

**The Owner Wants to Audit Us!
Accounting Isn't Just for Tax Returns and Awards Shows**

While the economic forecasts for the construction sector are showing signs of improvement, maintaining cost controls on public and even private projects remains a high priority. The speakers for this workshop will describe practical experiences in dealing with project audits.

Paul S. Ficca

FTI Consulting, Inc. | Seattle, WA

Scott P. Fitzsimmons

Watt, Tieder, Hoffar & Fitzgerald L.L.P. | McLean, VA

11:20 A.M. – 11:30 A.M.

NETWORKING BREAK



**JANUARY 21-22, 2016
WESTIN ST. FRANCIS | SAN FRANCISCO, CA**

11:30 A.M. – 12:30 P.M.

PLENARY II:

Our Project Manager (and Key Witness) Just Left for Our Biggest Competitor!

With everybody on the move these days, sometimes a key client witness on the project does not remain employed throughout the duration of the claim process that can follow the project conclusion. Hear approaches and insights on protecting evidentiary and proprietary information, as well as practical advice for maintaining contact with the former employee for purposes of claim preparation and trial testimony.

R. Thomas Dunn

Pierce Atwood, LLP | Providence, RI

Daniel S. Terrell

PLH Group, Inc. | Irving, TX

Co-Sponsored by the ABA Section of Litigation Construction Litigation Committee.

12:30 P.M. – 1:40 P.M.

DIVISION LUNCHES AND DIVISION INTRODUCTION LUNCH (OPEN TO ALL REGISTRANTS)

Network with construction professionals who share your interests at one of the Division Lunches or attend the Division Introduction Lunch to meet representatives of several Divisions to help you decide which are best for you.

1:40 P.M. – 1:45 P.M.

TRANSITION BREAK

1:45 P.M. – 2:45 P.M.

WORKSHOP C

Contract? We Don't Need No Stinking Contract! Analyzing the Shifting Sands of the Once Venerable "Economic Loss Doctrine"

This is not your parents' Economic Loss Doctrine. Increasingly, courts and legislatures are finding ways to carve out exceptions to the Doctrine to permit project participants to make claims directly against architects, engineers, and construction managers. The speakers will counterpoint the latest developments to make sure you are ready to confront this issue.

Catherine R. Bell

Polsinelli PC, Polsinelli LLP in California | Kansas City, MO

Ted D. Levin, P.E., J.D.

Morris Polich & Purdy LLP | Los Angeles, CA

1:45 P.M. – 2:45 P.M.

WORKSHOP D

Builders-Risk: From the Basics to Best Practices

Requiring Builders-Risk insurance coverage in the contract documents is just the first step. What are the rights and obligations of the project participants and the carrier when catastrophe strikes? What events, beyond Acts of God, does Builders-Risk insurance cover? This workshop will prepare you to approach Builders-Risk questions with certainty.

Daniel P. King

Frost Brown Todd, LLC | Indianapolis, IN

Steve Niparko

Aon Risk Solutions | Denver, CO

2:45 P.M. – 2:55 P.M.

NETWORKING BREAK

2:55 P.M. – 4:10 P.M.

PLENARY III:

Help! Our Superintendent is Stoned, Our Receptionist Has Been Harassed, Our Workers are Undocumented and Our MBE/WBEs Have Never Actually Been On-site. It's a Labor-palooza!

Labor is an essential component of every project and regularly comes with a host of diversified regulatory issues. Experienced attorneys will present emerging issues, including workplace issues raised by legalized marijuana, MBE/WBE fraud, Immigration and Customs Enforcement audits and raids, and updates in harassment law in an extended session.

D. Albert Brannen

Fisher & Phillips, LLP | Atlanta, GA

Jacob M. Monty

Monty & Ramirez LLP | Houston, TX

Michael A. Schwartz

Pepper Hamilton LLP | Philadelphia, PA

4:10 P.M. – 4:15 P.M.

NETWORKING BREAK

4:15 P.M. – 5:15 P.M.

PLENARY IV:

Our Job Was Just Stolen by a Bidding Bandit! Bidding Errors, Bid Protests and Bidding Litigation

Getting the low bid in on time sometimes is just not enough. Bidding errors, withdrawals, and protests may be lurking behind the scenes, and require quick action. An experienced jurist and seasoned counselors will discuss best practices in identifying and responding to errors in bids and current hot protest issues, including best practices in bringing and responding to protests to successfully impersonate or defeat the bidding bandit.

The Honorable Mary Ellen Coster Williams

United States Court of Federal Claims | Washington, DC

Jennifer L. Dauer

Diepenbrock Elkin LLP | Sacramento, CA

Aaron P. Silberman

Rogers Joseph O'Donnell a Professional Law Corporation | San Francisco, CA

5:15 P.M. – 5:20 P.M.

CLOSING REMARKS AND ANNOUNCEMENTS

5:30 P.M. – 8:00 P.M.

SUNSET WINE TASTING AND WELCOME RECEPTION

After the sessions have concluded, join us atop the St. Francis for a not to be missed Welcome Reception. Multiple local wineries will be stationed for a wine tasting event with the setting sun providing the most beautiful backdrop and a special perspective of San Francisco.

10:00 P.M. – 1:00 A.M.

FORUM AFTER DARK

For all you Forum night owls, join us at the former speakeasy, "Slide", for some late night relaxation with your colleagues and friends. The Forum has several tables reserved for this first day closing event.

Slide | 430 Mason Street | San Francisco, CA 94102



FRIDAY, January 22, 2016

7:30 A.M. – 8:30 A.M.

DIVERSITY BREAKFAST

From being a leader at the international law firm of O'Melveny & Myers, to co-owning the WNBA World Champion LA Sparks, to, most recently, becoming Executive Vice President and General Counsel of the global design, construction and management powerhouse, AECOM, Carla Christofferson has developed a sharp sense for the importance of diversity in whatever you are trying to accomplish. Stressing a conviction to see clearly and keep moving forward, Ms. Christofferson will talk about actively supporting diversity while building teams in a variety of situations and not letting obstacles throw you off your game of achieving your goals.

Carla Christofferson, Executive Vice President and General Counsel
AECOM | Los Angeles, CA

8:30 A.M. – 9:30 A.M.

PLENARY V:

It's a Catastrophe, but We Have a Force Majeure Clause, So No Worries, Right?

Force majeure events continue to impact projects of all types. The events themselves are changing – are the contract documents you are using accommodating those changes? This session will focus on recent case interpretations and drafting strategies for the new era of force majeure occurrences, including climate changes, rising sea levels, terrorism threats and material shortages and embargoes. You will never look at your force majeure clause the same way again.

Sandy M. Kaplan

Gordon Rees Scully Mansukhani, LLP | San Francisco, CA

David A. Senter

Nexsen Pruet, PLLC | Greensboro, NC

9:30 A.M. – 9:35 A.M.

DAILY REMARKS AND ANNOUNCEMENTS

9:35 A.M. – 9:45 A.M.

NETWORKING BREAK

9:45 A.M. – 10:45 A.M.

WORKSHOP E

When Green Turns Mean:

What Are the Responsibilities of the Parties on a Sustainable Project?

The push to “go green” and the design community’s internal mandate to design in a sustainable manner raises significant questions related to the duties owed to the owner and whether the owner is giving appropriate informed consent on design elements. Are design professionals adequately informing the owners regarding decisions that the design professional is making in building systems and materials? What are the duties that the design professional owes to the owner in this regard? How do these duties impact other project participants?

Melissa A. Beutler, LEED AP

Big-D Construction Corp. | Salt Lake City, UT

Ujval Vyas, Ph.D., J.D.,

Alberti Group LLC | Chicago, IL

9:45 A.M. – 10:45 A.M.

WORKSHOP F

Oh, That’s Just Great, a Bankruptcy Petition was Just Filed!

Project participant insolvency and bankruptcy can threaten even the most solid construction undertakings. This workshop will address financially-troubled and insolvent/bankrupt projects and participants, including issues that arise after the project is completed.

The Honorable Benjamin A. Kahn

United States Bankruptcy Court for the Middle District of North Carolina
Greensboro, NC

Barry J. Miller

Benesch, Friedlander, Coplan & Aronoff LLP | Cleveland, OH

10:45 A.M. – 10:55 A.M.

NETWORKING BREAK

10:55 A.M. – 11:55 A.M.

PLENARY VI:

Enduring the Electric Slide: An Ethical Enclave on Electronic Technology Developments

Turning a blind eye toward electronic data and management issues is no longer an option for construction attorneys. Competency in dealing with electronic data management, preservation and production is now an ethical requirement in many jurisdictions. Just when you thought you might have a handle on these issues, here come cloud-based storage, BYOD (bring your own device) policies, the proliferation of integrated voice and email systems, and even text message preservation.

Adam I. Cohen, CISSP

Berkeley Research Group, LLC | New York, NY

James R. Hankle

Sherrard, German & Kelly, P.C. | Pittsburgh, PA

11:55 A.M. – 12:00 P.M.

CLOSING REMARKS AND ADJOURNMENT

12:15 P.M. – 1:15 P.M.

WOMEN’S NETWORKING LUNCHEON AND RECEPTION

An opportunity for women registrants to interact and develop professional relationships.



SPECIAL EVENTS

WEDNESDAY, January 20, 2016

2:00 P.M. – 5:00 P.M.

CONSTRUCTION LAW PRACTICUM - WRITTEN ADVOCACY IN CONSTRUCTION LITIGATION

Due to the complexity of construction cases, a great deal of advocacy occurs in the form of written discovery requests and responses, as well as motions and briefs submitted to the court or tribunal. Although not as glamorous as cross examination or closing arguments, excellence in written advocacy is an important component to becoming a skilled construction attorney. Cases can be won or lost through written advocacy. Most attorneys spend more time advocating through writing than in the courtroom. Many construction cases include complex technical issues and knowing how to present those issues succinctly and simply while still conveying your point is an important skill. Please join us for a practicum with several nationally-recognized construction attorneys who will discuss how to be more effective in your written advocacy. (\$50 Fee)

Presented By:

Division 1 - Litigation and Dispute Resolution;
The Young Lawyers Division; and
The Forum Leadership Circle

GOLFERS!

Although no formal golf outing has been scheduled in conjunction with this meeting, many Forum regulars will take advantage of the opportunity for some golf at the many outstanding courses in the Bay area during the week of the meeting. Please contact **Frank Elmore**, felmore@elmoregoldsmith.com if you would like more information about these informally arranged tee times.

5:30 P.M. – 7:30 P.M.

FIRST TIME ATTENDEE & NEW MEMBER RECEPTION

This reception welcomes those attending their first Forum meeting, and welcomes back any who are attending for the first time in five or more years. Come enjoy happy hour with other first-timers and meet the leadership of the Forum and our valued exhibitors.

SPECIAL EVENTS

THURSDAY, January 21, 2016

8:30 A.M. – 10:00 A.M.

SPOUSES' BREAKFAST CONVERSATION WITH FORUM

Come enjoy breakfast and conversation with Forum spouses and guests.

12:30 P.M. – 1:40 P.M.

DIVISION LUNCHES AND DIVISION INTRODUCTION LUNCH (OPEN TO ALL REGISTRANTS)

Network with construction professionals who share your interests at one of the Division Lunches or attend the Division Introduction Lunch to meet representatives of several Divisions to help you decide which are best for you.

5:30 P.M. – 8:00 P.M.

SUNSET WINE TASTING AND WELCOME RECEPTION

After the sessions have concluded, join us atop the St. Francis for a not to be missed Welcome Reception. Multiple local wineries will be stationed for a wine tasting event with the setting sun providing the most beautiful backdrop and a special perspective of San Francisco.

10:00 P.M. – 1:00 A.M.

FORUM AFTER DARK

For all you Forum night owls, join us at the former speakeasy, Slide, for some late night relaxation with your colleagues and friends. The Forum has several tables reserved for this first day closing event.

Slide | 430 Mason Street | San Francisco, CA 94102

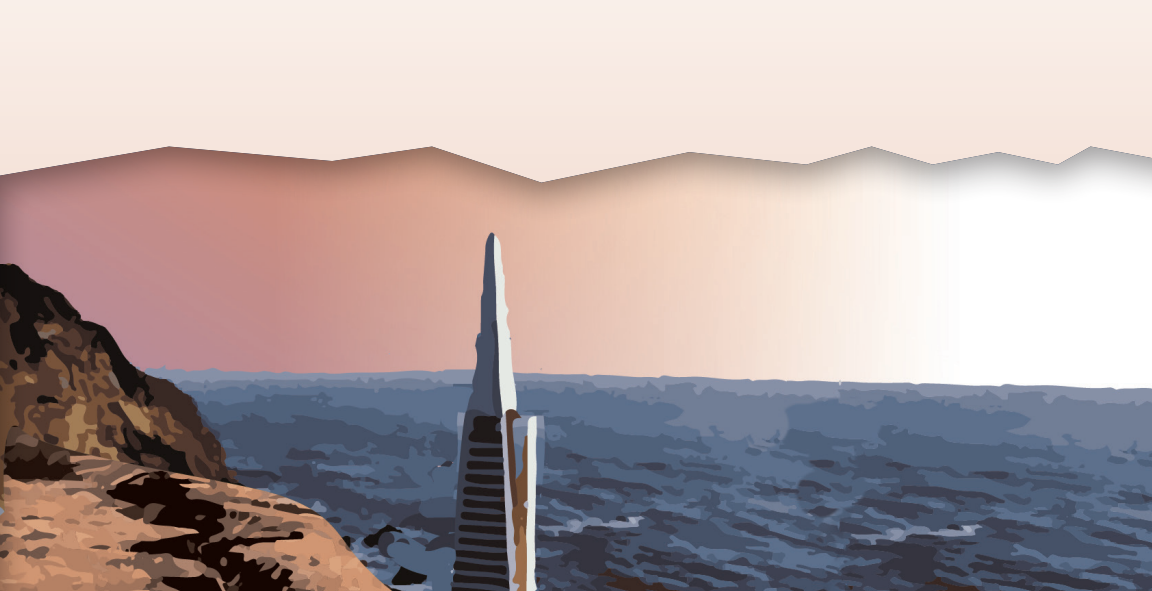
FRIDAY, January 22, 2016

7:30 A.M. – 8:30 A.M.

DIVERSITY BREAKFAST

Carla Christofferson, Executive Vice President and General Counsel

AECOM | Los Angeles, CA





SPECIAL EVENTS

FRIDAY, January 22, 2016

12:15 A.M. – 1:15 P.M.

WOMEN'S NETWORKING LUNCHEON & RECEPTION

An opportunity for women registrants to interact and develop professional relationships.

3:50 P.M. – 7:50 P.M.

ESCAPE TO ALCATRAZ

After the Forum's Midwinter Meeting sessions have wrapped up, make sure to count yourself among 60 of us who will be taking a 3:50 PM Twilight Tour of the famous prison island in the Bay. We will be departing from the hotel by cabs to Pier 33 where we will embark on a 3 hour tour of Alcatraz (which will include a beautiful vantage point for a Friday afternoon sunset). Following your walking tour of Alcatraz and a movie about this both famous and infamous facility, you will return by boat to Pier 33 where you can enjoy the sights and sounds of the famed Fisherman's Wharf. You will be responsible for your return journey from the Pier 33 dock back to the hotel or wherever else you choose to venture that evening. Space is limited for this unique experience. (\$25 fee)

SATURDAY, January 23, 2016

10:00 A.M. – 6:00 P.M.

NAPA VALLEY GETAWAY

Please join us for an unforgettable tour of one of Napa's hidden gems, MadoroM Vineyards. We will provide bus transportation to the winery from the hotel. Once you arrive at MadoroM, you will be treated to a catered lunch, a tour of the winery, and a wine tasting of some of MadoroM's finest vintages. Transportation will be provided from MadoroM back to the Hotel when the tour concludes. Space is limited so please reserve a spot on the tour. (\$50 fee)

MadoroM Vineyards

2340 Silverado Trail
Napa, CA 94558

SAVE THE DATE

Future Programs

2016 ANNUAL MEETING

APRIL 28-30, 2016
NASHVILLE, TN

2016 FALL MEETING

OCTOBER 6-7, 2016
MONTREAL, QUEBEC

2017 MIDWINTER MEETING

FEBRUARY 2-3, 2017
PALM DESERT, CA

2016 REGIONAL MEETINGS

FEBRUARY 26, 2016

LOS ANGELES, CA

JACKSONVILLE, FL

NEW ORLEANS, LA

MARCH 4, 2016

INDIANAPOLIS, IN

CHARLOTTE, NC

NEWARK, NJ

SOCIAL MEDIA



LinkedIn

bit.ly/ABAconstruction_linkedin



Twitter

www.twitter.com/abaconstruction - @ABAConstruction



Facebook

www.facebook.com/ABAConstruction

#ABAConstruct - for the Forum on Construction Law
#FCLSanFran - for the 2016 Midwinter Meeting

Additional information about these programs
can be found on the Forum's website: ambar.org/constructionlaw



JANUARY 21-22, 2016
WESTIN ST. FRANCIS | SAN FRANCISCO, CA

CONFERENCE INFORMATION

HOUSING:

The conference will be held at the Westin St. Francis on Union Square, San Francisco, CA. To reserve a hotel room call the hotel directly 415-397-7000 or use the web link <https://www.starwoodmeeting.com/events/start.action?id=1509256045&key=21F5135E>. The deadline for reservations is December 21, 2015 at 5:00 pm (CST) or until the block is exhausted. Room rates are: \$279/ night (plus tax). Please reference the ABA Forum on Construction Law 2016 Midwinter Meeting. You must register for the conference prior to making your hotel reservation.

AIR TRAVEL:

Airfare and car rental discounts for ABA meetings are available through ABA Orbitz for Business. To book online, go to www.americanbar.org/travel > click on the Orbitz for Business logo at the top of the page > read the instructions under the "Travel Paid by Self" box. For assistance with online or offline reservations using the ABA Orbitz for Business website, call toll free 877-222-4185. Additional airline discounts may be available. Visit http://www.americanbar.org/membership/travel_services/air_travel_discounts.html for more information.

PROGRAM REGISTRATION:

Online at ambar.org/FCLmid16 or complete and return the attached registration form with your payment by January 6, 2016. Conference registrations will only be accepted when accompanied by a check, Visa, American Express, Discover or MasterCard information. Credit card registrations may be FAXED directly to the ABA at 312-988-5850. Registrations cannot be processed without payment. If you do not receive a written confirmation by January 8, 2016, please call the ABA at 312-988-6319 to verify that your registration form and payment were received.

ON SITE REGISTRATION:

Onsite registration is available for those persons who miss the registration deadline. If you plan to register at the door, you must email Kathryn.Henning@americanbar.org 72 hours before the conference to confirm that space is still available. Failure to call in advance may result in not being admitted to a sold out program. No cash payments accepted.

SCHOLARSHIP:

Scholarships may be available.

For more information email Tamara.Harrington@americanbar.org or call 312-988-5674.

CANCELLATION POLICY:

No refunds will be granted for cancellations received after January 6, 2016. To receive a refund, minus a \$50 administrative fee, cancellations must be made IN WRITING and RECEIVED by Tamara.Harrington@americanbar.org.

CLE CREDIT:

The ABA directly applies for and ordinarily receives CLE credit for ABA programs in AK, AL, AR, AZ, CA, CO, DE, GA, GU, HI, IA, IL, IN, KS, KY, LA, MN, MS, MO, MT, NH, NM, NV, NY, NC, ND, OH, OK, OR, PA, SC, TN, TX, UT, VT, VA, VI, WA, WI, and WV. These states sometimes do not approve a program for credit before the program occurs. This course is expected to qualify for 12.0 CLE credit hours (including 1.0 ethics hours) in 60-minute states, and 14.4 CLE credit hours (including 1.2 ethics hours) in 50-minute states. This transitional program is approved for both newly admitted and experienced attorneys in NY. Attorneys may be eligible to receive CLE credit through reciprocity or attorney self-submission in other states. For more information about CLE accreditation in your state, visit http://www.americanbar.org/cle/mandatory_cle.html or contact Kathryn Henning at Kathryn.Henning@americanbar.org or 312-988-6319.

MEMBERSHIP:

To join the Forum go to ambar.org/constructionlaw.

PRIVACY NOTICE:

Registration for, attendance at, or participation in the Forum conferences and other associated activities constitutes an agreement by the registrant or participant to permit the American Bar Association to use and distribute (both now and in the future) the registrant or participant's image or voice in photographs, videotapes, electronic reproductions, and audiotapes of such event and activities.

COPYRIGHT NOTICE:

The material contained in this American Bar Association listing is protected by copyright and is solely intended for the individual and private use of ABA members in a manner that is consistent with the ABA's mission, goals and activities. All other use is strictly prohibited without prior written authorization from the ABA. Prohibited use includes but is not limited to the copying, renting, leasing, selling, distributing, transmitting or transfer of all or any portions of the material, or use for any other commercial and/or solicitation purposes of any type, or in connection with any action taken that violates the ABA's copyright. The material is not to be used for any mass communications, and may be used only for one-to-one member communication. For information concerning appropriate use of the material, contact the ABA Service Center at 1-800-285-2221.

TAX DEDUCTION FOR EDUCATIONAL EXPENSES:

In the United States an income tax deduction may be allowed for educational expenses undertaken to maintain or improve professional skills. This includes registration fees, travel, meals and lodging expenses (see Treas. Reg. Sec. 1.162-2) *Coughlin v. Commissioner*, 203 F.2d 307 (2nd Cir. 1953.)

AMERICANS WITH DISABILITIES ACT:

If special arrangements are required for disabled individuals to attend this program, please contact the Forum in writing by December 28, 2015 at the American Bar Association, 321 N. Clark Street, Chicago, Illinois, 60654. Fax: 312-988-5677.

Email Tamara.Harrington@americanbar.org.

COMMUNICATIONS NOTICE:

Registrants for this program agree to be contacted electronically regarding the program by Forum staff and program committee persons.

QUESTIONS:

If you have questions or require additional conference information, please call 312-988-5674 or email Tamara.Harrington@americanbar.org.

PROGRAM REGISTRATION

- 2016 MIDWINTER MEETING

Three Ways to Register

Register online at ambar.org/FCLmid16, or by faxing your form to Attention: Forum on Construction Law at 312-988-5850, or by mail by sending the completed registration form to the American Bar Association, Attention: Service Center - Meeting/Event Registration FCL0116, 321 N. Clark St. - FL 16, Chicago, IL 60654.

Registrant Information (Please Print)

Last Name _____ First Name _____ M.I. _____
(Name as you wish it to appear on attendee list and name badge) ABA Member ID# _____
Firm/Company/Agency _____
Address _____
City _____ State _____ Zip _____
(Area Code) Business Phone Number _____ (Area Code) Business Fax Number _____
Email Address _____

Program Events

WEDNESDAY, January 20, 2016

- 2:00 P.M. - 5:00 P.M. YOUNG LAWYERS PRACTICUM
 5:30 P.M. - 7:30 P.M. FIRST TIME ATTENDEE & NEW MEMBER RECEPTION

THURSDAY, January 21, 2016

- 5:30 P.M. - 8:00 P.M. WELCOME RECEPTION
 10:00 P.M. - 1:00 A.M. FORUM AFTER DARK

FRIDAY, January 22, 2016

- 7:30 A.M. - 8:30 A.M. DIVERSITY BREAKFAST
 12:15 P.M. - 1:15 P.M. WOMEN'S NETWORKING LUNCHEON & RECEPTION
 3:50 P.M. - 7:50 P.M. TWILIGHT TOUR OF ALCATRAZ (60 attendee limit; \$25/attendee)

SATURDAY, January 23, 2016

- Day Trip to Napa Valley (\$50/attendee-transportation and lunch included)

Registration Category

	Early Bird (On or before December 21, 2015)	Regular Price (After December 21, 2015)
____ Non-ABA Member	\$800	\$850
____ ABA Member	\$700	\$750
____ Forum Member	\$580	\$630
____ New Forum Member/First Time Attendee/YLD*	\$455	\$505
____ 20-Year Forum Member*	\$455	\$505
____ Government/Academic/In-House*	\$420	\$470
____ Past Forum Governing Committee*	\$350	\$400
____ Law Student	\$50	\$65
____ Young Lawyer Practicum	\$50	\$50
____ Welcome Reception Guest Ticket	\$65	\$65

Materials Only:

I will not be attending and wish to order program materials at \$150.00.

Forum Membership:

Enroll me as a member of the Forum on Construction Law: \$60.00/regular, \$0/law student (ABA Membership is required)

*Denotes this rate needs a registration discount code. Please contact Kathryn.Henning@americanbar.org.

Payment Information:

TOTAL \$ _____

Check (made payable to ABA-Forum on Construction Law CI1601)

Credit Card: MasterCard, American Express, Visa or Discover

Credit Card Number _____ Expiration Date _____

Signature _____

For additional information contact Tamara.Harrington@americanbar.org.